

# Sea Side 110

16 Dolphin Drive, Mandurah, WA. 6210



## FEATURES:



2 Occupancy



1 Bedroom



1 Bathroom



1 Car Parking



Air Conditioning



Dish Washer



Strict NO Party Policy



Strict NO Pets Accepted



WIFI Internet



Full Kitchen



Linen Included



Washing Machine

## ABOUT THIS PROPERTY

---

Modern one bedroom, one bathroom, fully furnished, self contained apartment with a spacious balcony and views of dolphin pool

Linen, Towels and Bedding provided. Please Note: Beach Towels are not provided

## KITCHEN & COOKING FACILITIES

---

Full kitchen facilities, fridge, oven, dishwasher and microwave. Outdoor entertaining area

## BEDROOMS & BEDDING CONFIGURATION

---

This property ideal for 2 people,

Bedroom 1: 1 x King Bed (can be split into 2 singles)

## BATHROOMS

---

En-suite bathroom with shower over bath

## HEATING & COOLING FACILITIES

---

- Split system heating and cooling in open plan living area.
- Fan in bedroom

## LAUNDRY DETAILS

---

- Washing machine
- Tumble dryer

## ENTERTAINMENT FACILITIES

---

- Flat screen TV in lounge
- CD player
- Free Wifi

## EXTRA FACILITIES

---

Full access to Resort facilities including swimming pool, tennis court and BBQ's

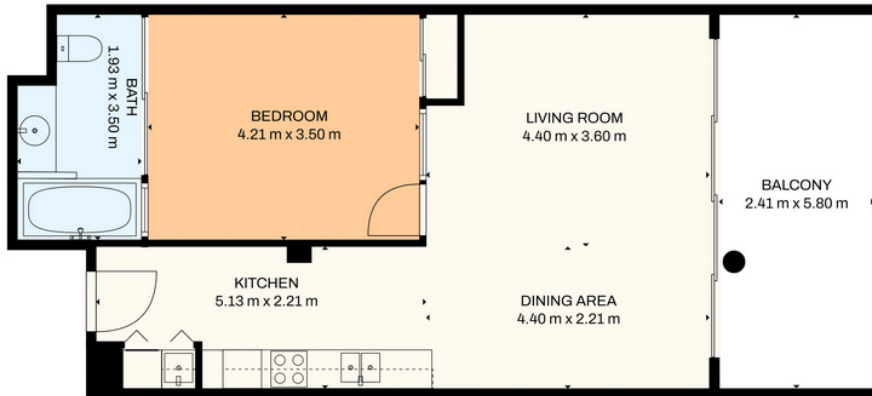
## PARKING

---

Free secure parking included

# Sea Side 110

16 Dolphin Drive, Mandurah, WA. 6210



Total scanned area: 73 m<sup>2</sup>

MEASUREMENTS ARE CALCULATED BY TECHNOLOGY, DEEMED HIGHLY RELIABLE BUT NOT GUARANTEED.

